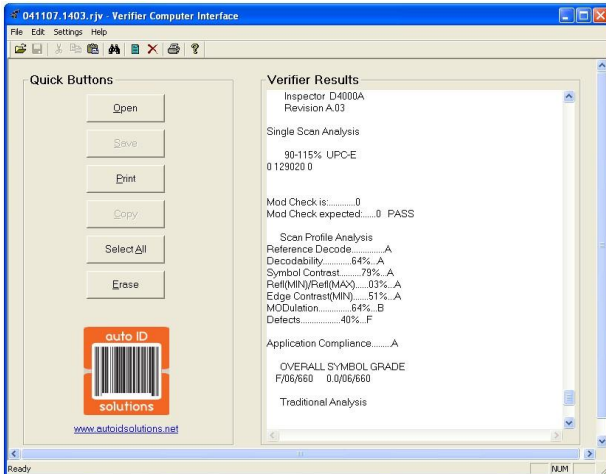
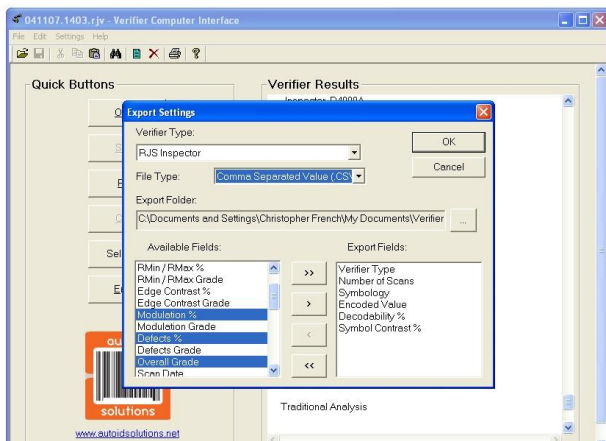


Verifier Computer Interface with Excel Exporting Viewer/Printer by



Features

- Simple user interface
- Maintain bar code inspection report database (with time and date stamps)
- Custom reports for each Job
- Print reports on any standard Windows printer
- Transfer inspection results into Customer Management or Quality Control software applications
- Compatible verifiers:
 - ✓ RJS Laser Inspector® 1000
 - ✓ RJS Inspector® 2000
 - ✓ RJS Inspector® 3000
 - ✓ RJS Inspector® 4000
 - ✓ RJS Inspector® D4000 (Auto Optic or Laser Gun)



Select which fields to include on the custom report

The Verifier Computer Interface is the alternative to thermal printers from Auto ID Solutions

We listened to our customers and the result was this product. It is a more economical alternative to thermal printers for RJS bar code verifiers and a way to electronically save quality reports.

Using the built-in printing functionality of hand-held bar code verifiers, this product transfers the quality report to the proprietary Auto ID Solutions Windows software application. A time and date stamp is immediately applied to track product quality over time. The report can be saved to a local or network location and later retrieved to reprint reports. Reports may be printed to any standard Windows printer.

Product includes:

- Installation CD
- Interface cable
- Software Key
- USB adapter (optional)



System requirements:

- Microsoft Windows® 95, 2000, or XP
- Pentium 200Mhz
- 32 Meg of RAM
- 2 Meg of Hard drive space
- Parallel port (printer may still be used)
- Serial or USB port

This equipment and its documentation were developed to fit into your company's existing ISO 9000/9001/9002 policies and procedures.



www.autoidsolutions.net

Sales, Support, and Calibration +1.866.828.8643
701 Decatur Ave N 106, Minneapolis, MN 55427

Example of an extended report with 11 bar code inspections saved within the job report

	A	B	C	D	E	F	G	H	I	J	K	L	M	N
	Verifier Type	Number of Scans	Scan Date	Scan Time	Symbology	Encoded Value	Overall Grade	Bar Deviation Chart	Reference Decode Grade	Decodability %	Decodability Grade	Symbol Contrast %	Symbol Contrast Grade	Modulation %
1	D4000A	1	4/11/2007	14:03:46	USS 2of5	10012345678902	D	R-----+++++++	F	0%	F	45%	C	51%
2	D4000A	1	4/11/2007	14:03:52	USS 128	*7790* C1977*	C	-----+RRAR+++	A	46%	C	88%	A	70%
3	D4000A	1	4/11/2007	14:03:56	90-115% UPC-A	0 34707 03948 3	A	-----RRARR+++	A	86%	A	78%	A	76%
4	D4000A	1	4/11/2007	14:04:00	90-115% UPC-A	6 36221 00823 7	A	-----RRAR++++	A	65%	A	81%	A	65%
5	D4000A	1	4/11/2007	14:04:04	USS 2of5	50051131971344	A	RRAR---+++++++	A	62%	A	79%	A	91%
6	D4000A	1	4/11/2007	14:04:23	USS 3of9	*800002A*	A	-----RRAR+++++	A	73%	A	61%	B	73%
7	D4000A	1	4/11/2007	14:04:38	USS 3of9	*3JEBM724B196033202X*	A	-----RAR+++++	A	85%	A	75%	A	65%
8	D4000A	1	4/11/2007	14:04:43	90-115% UPC-A	0 43000 14001 7	A	-----RRRARR+++	A	58%	B	77%	A	80%
9	D4000A	1	4/11/2007	14:04:48	USS 2of5	1.00267E+13	F	-----++AR++	F	0%	F	57%	B	64%
10	D4000A	1	4/11/2007	14:04:53	90-115% UPC-E	0 129020 0	F	-----++RRA+++	A	64%	A	79%	A	64%

Example of a minimal report with 11 bar code inspections saved within the job report and a chart

	A	B	C	D	E	F	G	H	I	J	K	L	M	N	O	P	Q	R	S
	Verifier Type	Symbology	Encoded Value	Overall Grade	Overall Grade	Overall Grade													
1	D4000A	90-115% UPC-E	0 129020 0	C	2.00														
2	D4000A	USS 2of5	10026700400138	F	0.00														
3	D4000A	90-115% UPC-A	0 43000 14001 7	A	4.00														
4	D4000A	USS 3of9	*0123456789*	A	4.00														
5	D4000A	USS 3of9	*800002A*	A	4.00														
6	D4000A	USS 2of5	50051131971344	A	4.00														
7	D4000A	90-115% UPC-A	6 36221 00823 7	A	4.00														
8	D4000A	90-115% UPC-A	0 34707 03948 3	A	4.00														
9	D4000A	USS 128	*7790* C1977*	B	2.00														
10	D4000A	USS 2of5	10012345678902	D	1.00														

Example of a standard single scan inspection report

```

Log started on 111304.1839
Inspection Report Printed: November, 13 2004 at 16:39:10

Inspector D4000A
Revision A.02

10-Scan Average Analysis
90-115%UPC-A
0 38000 08323 7

Mod Check is:.....7
Mod Check expected:.....7 PASS

Scan Profile Analysis
Reference Decode:.....A
Decodability:.....82_A
Symbol Contrast:.....77_A
RefI(MIN)/RefI(MAX):.....02_A
Edge Contrast(MIN):.....62_A
MODulation:.....79_A
Defects:.....11_A

Application Compliance:.....A

OVERALL SYMBOL GRADE
A/06/600 3.6/09/600

Traditional Analysis
Acceptable
-100Tol +100
-----RRARR++++

Print Contrast Signal...07PASS
Required PCS:.....64
Element RefI(MAX):.....79PASS
Reflectance(MIN):.....02PASS

Pass/Fail Analysis
Passing Grade Selected.....C
Final Results:.....PASS
    
```



www.autoidsolutions.net
 Sales, Support, and Calibration +1.866.828.8643
 701 Decatur Ave N 106, Minneapolis, MN 55427