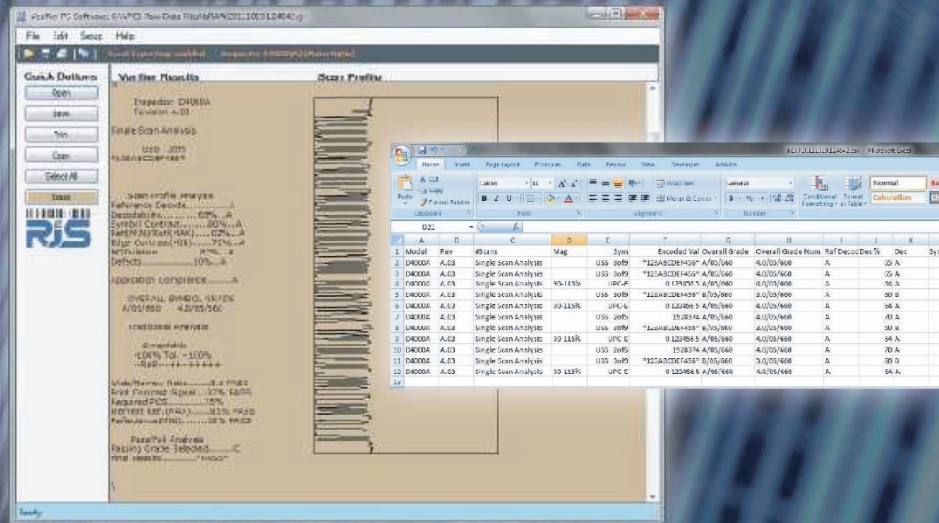


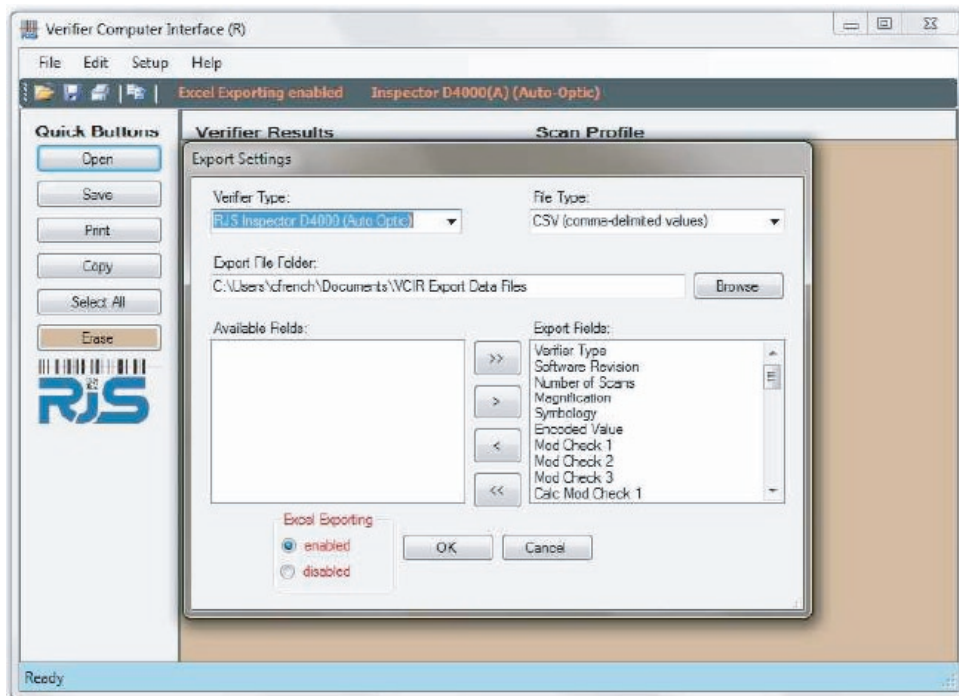
Verifier Computer Interface Report (VCIR)

Bar Code Verifier by



Features

- Simple user interface
- Maintain bar code inspection report database (with time and date stamps)
- Custom reports for each job
- Viewable and Printable Scan Reflectance Profile
- Print reports on any standard Windows® printer
- Transfer inspection results into Customer Management or Quality Control software applications
- Compatible verifiers:
 - ✓ RJS Inspector® 5000 (Auto Optic or Laser Gun)
 - ✓ RJS Inspector® Models 1000, 2000, 3000, 4000
 - ✓ RJS Inspector® D4000 (Auto Optic or Laser Gun)
 - ✓ RJS Inspector® GS D4000



The Verifier Computer Interface Report is the alternative to thermal printers and allows for exporting data to statistical reporting tools, archiving, and printing of inspection reports.

The Verifier Computer Interface Report (VCIR) software is a simple to use Windows program that allows for inspection reports to be transferred from any RJS verifier to any Windows® PC.

Once transferred, a time/date stamp is applied and the software can output a text, the scan reflectance profile, or a CSV Excel spreadsheet report. Jobs can be saved and appended to maintain production records and inspection data can be saved to a network drive for automated backups.

Product includes:

- Interface cable
- Software Download
- USB adapter (optional)

System requirements:

Microsoft Windows® XP or Later
Serial or USB port

This equipment and its documentation were developed to fit into your company's existing ISO 9000/9001/9002 policies and procedures.

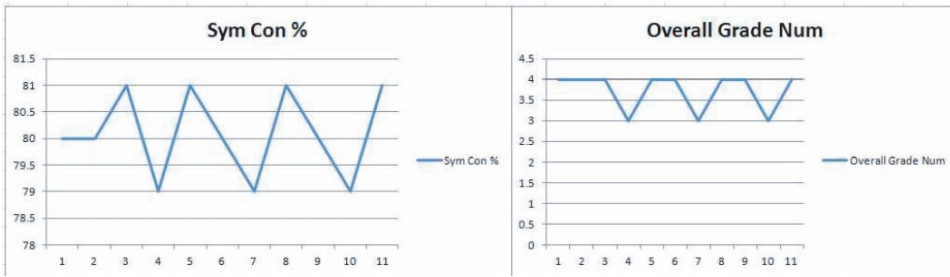


Verifier Computer Interface Report (VCIR)

Example of an extended report with 12 bar code inspections saved within the job report

A	B	C	D	E	F	G	H	I	J	K	L	M	N	O	P	Q	
1	Model	Rev	#Scans	Mag	Sym	Encoded Val	Overall Grade	Overall Grade Num	Ref Decode	Dec %	Dec	Sym Con %	Sym Con	RMin/RMax %	RMin/RMax	Edge Con %	Edge Con
2	D4000A	A.03	Single Scan Analysis		USS 3of9	*123ABCDEF456*	A/05/660	4.0/05/660	A	65	A	80	A	2	A	70	A
3	D4000A	A.03	Single Scan Analysis		USS 3of9	*123ABCDEF456*	A/05/660	4.0/05/660	A	65	A	80	A	2	A	70	A
4	D4000A	A.03	Single Scan Analysis	90-115%	UPC-E	0 123456 5	A/05/660	4.0/05/660	A	64	A	81	A	1	A	69	A
5	D4000A	A.03	Single Scan Analysis		USS 3of9	*123ABCDEF456*	B/05/660	3.0/05/660	A	60	B	79	A	1	A	68	A
6	D4000A	A.03	Single Scan Analysis	90-115%	UPC-E	0 123456 5	A/05/660	4.0/05/660	A	64	A	81	A	1	A	69	A
7	D4000A	A.03	Single Scan Analysis		USS 2of5	1928374	A/05/660	4.0/05/660	A	70	A	80	A	1	A	71	A
8	D4000A	A.03	Single Scan Analysis		USS 3of9	*123ABCDEF456*	B/05/660	3.0/05/660	A	60	B	79	A	1	A	68	A
9	D4000A	A.03	Single Scan Analysis	90-115%	UPC-E	0 123456 5	A/05/660	4.0/05/660	A	64	A	81	A	1	A	69	A
10	D4000A	A.03	Single Scan Analysis		USS 2of5	1928374	A/05/660	4.0/05/660	A	70	A	80	A	1	A	71	A
11	D4000A	A.03	Single Scan Analysis		USS 3of9	*123ABCDEF456*	B/05/660	3.0/05/660	A	60	B	79	A	1	A	68	A
12	D4000A	A.03	Single Scan Analysis	90-115%	UPC-E	0 123456 5	A/05/660	4.0/05/660	A	64	A	81	A	1	A	69	A
13																	
14																	

Example of Inspection results chart



Windows Printer Reports

```

INSPECTOR D4000A
Revision A.03

Single Scan Analysis

USS 3of9
*123456*

Scan Profile Analysis
Reference Decode           A
Decodability               76% A
Symbol Contrast            93% A
Refl (Min)/Refl (Max)     07% A
Edge Contrast (Min)       57% A
MODulation                 61% B
Defects                    05% A
Application Compliance     A

Overall Symbol Grade
E/10/660      3.0/10/660

Traditional Analysis

Acceptable
-100% Tol. +100%
-----RAR+++++++

Wide/Narrow Ratio         2.3 PASS
Print Contrast signal     92% PASS
Required PCS              75%
Element Refl. (Max)       92% PASS
Reflectance (Min)         07% PASS

Pass/Fail Analysis
Passing Grade Selected    D
Final Results             *PASS*
    
```

